



# Superfy S200 BriteBin Smart Compactor

## Saving time and money with smart waste and recycling management

The **Superfy S200 BriteBin Smart Compactor** is an award winning solar or electrically powered compacting bin for both outdoor and indoor use. It is the perfect solution for managing general and recycling waste across towns and cities. Combined with the **Superfy Platform and App** enables councils, waste and recycling collectors to monitor in real-time the fill levels across their entire fleet of smart bins.

### Key Benefits

- Reduces carbon emissions
- Lowens operations and collections costs
- Helps create a cleaner environment
- Low running costs
- Eliminates single use plastic bin liners
- Creates additional waste collection efficiencies

#### Fill Level Sensor

- Accurate measurement
- Remote connectivity
- 24x7 reporting

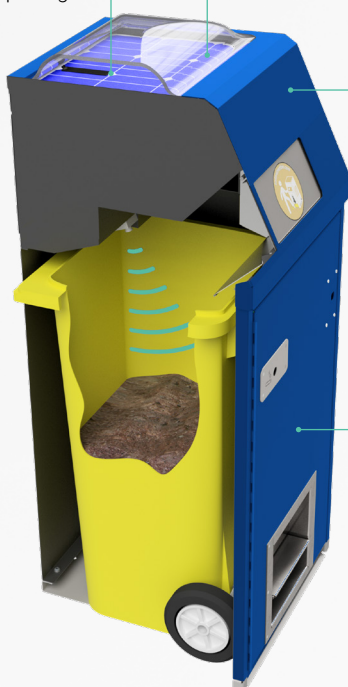
#### Solar or Electrical Powered Compactor

For outdoor and indoor deployment



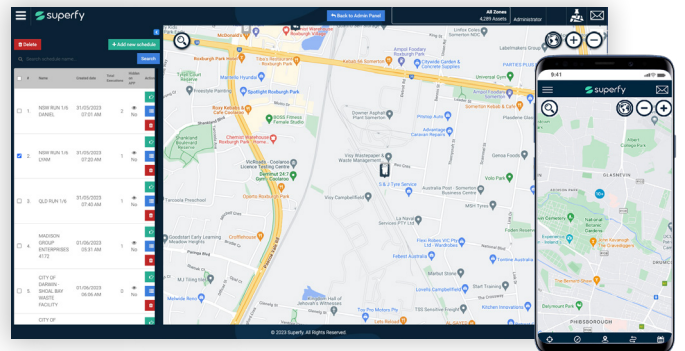
#### Superfy Platform and App

- dynamically track your assets
- optimize collection routes
- get real-time analytics



#### Smart Compactor

- All types of waste material
- Range of types & sizes
- Sealed, non-touch unit
- Standard internal wheelie bin or liner



# Superfy S200 BriteBin Smart Compactor

## TECHNICAL SPECIFICATIONS

<b>Dimensions</b>	<b>S200 100 L (26 Gallons) Front Door:</b> <b>S200 120 L (32 Gallons) Side Door:</b> 624 x 628 x 1345 mm (25 x 25 x 53 in) <b>S200 120 L (32 Gallons) Front Door:</b> 600 x 592 x 1347 mm (24 x 23 x 53 in) <b>S200 240 L (64 Gallons) Front Door:</b> 794 x 685 x 1478 mm (31 x 27 x 58 in) <b>S200 360 L (96 Gallons) Front Door:</b> 1213 x 645 x 1711 mm (48 x 25 x 67 in)
<b>Waste Opening</b>	Hopper or Flap opening
<b>Power Supply</b>	Solar powered generated by day light factor for outdoor or standard electrical connection for indoor use
<b>Service Door Location</b>	Side / Front / Rear
<b>Capacity</b>	<b>S200 120 L (32 Gallons)</b> up to 10 times the volume of a 60 L street bin <b>S200 240 L (64 Gallons)</b> up to 20 times the volume of a 60 L street bin <b>S200 360 L (96 Gallons)</b> up to 30 times the volume of a 60 L street bin
<b>Colour</b>	Grey Ral 7024 (standard)
<b>Optional Additions</b>	<ul style="list-style-type: none"> <li>• Bespoke Stickers / Partial wrap</li> <li>• Aperture Dimension and Shape (Rectangular / Circular)</li> <li>• Ashtray (Integrated / External)</li> <li>• Dog Waste Tray / Dog Waste Bag Dispenser</li> <li>• Custom Colour (Minimum order required)</li> </ul>

### Optional Service Door Locations

The service door can be located at the front, back or side of the machine. This allows you to place the door where best suits the location of the bin and avoid disruption to the general public.

### Waste Opening

There are two options for the waste opening. A Hopper which we recommend is cleaned every 2-3 months. Or alternatively, a Flap opening which is more commonly used as it does not require cleaning. (The size of the waste opening can be customised).



Superfy S220 BriteBin  
**indoor electrical**  
compacting bin

Superfy S210 BriteBin  
**outdoor solar**  
compacting bin