



# Superfy S121 BriteBin Smart Container

## Saving time and money with smart waste and recycling management

The **Superfy S121 BriteBin Smart Container** monitors and reports on fill levels in real-time to optimise material collection and maintenance of the bin and surrounding environment.

Each smart bin is fitted with a **Fill Level Sensor** and access to the **Superfy Platform and App**. The dual optical sensor implementation provides accurate distance and fill level sensing capability. The cloud based platform and mobile app uses this information to enhance the monitoring, collection and transport of waste and recycling materials.

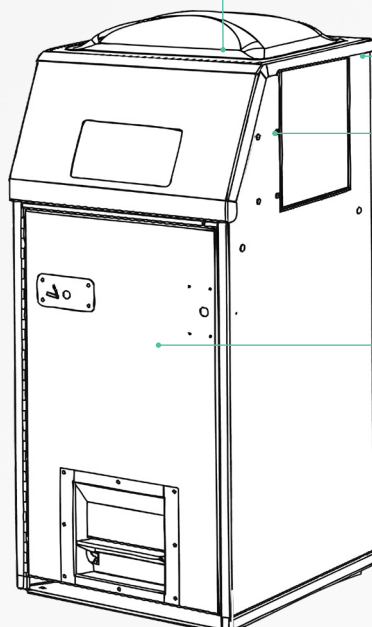
Ideal for smart cities, commercial waste and recycling collectors, construction sites, estates and parks, campuses and shopping malls.

### Key Benefits

- Reduces carbon emissions
- Lowers waste collections costs
- Helps create a cleaner environment
- Zero running costs
- Sealed, non-touch unit
- Eliminates single use plastic bin liners
- Creates efficiency across waste collection
- Standard internal wheelie bin or liner

#### Fill Level Sensor

- accurate measurement
- remote connectivity
- 24x7 reporting



#### Smart Container

- all types of waste material
- range of types & sizes
- for indoor, outdoor multi-stream

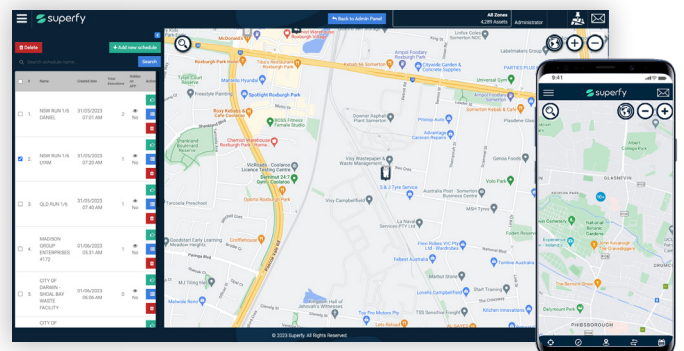
#### Optional Service Door Locations

- front
- back
- side



#### Superfy Platform and App

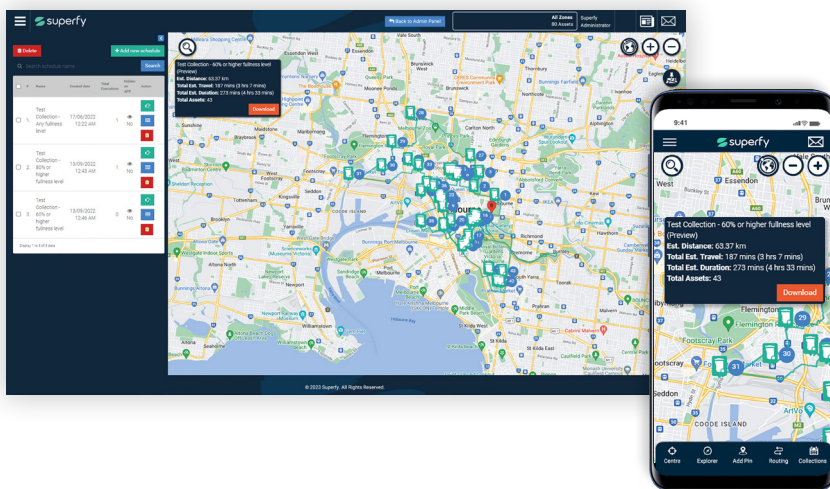
- dynamically track your assets
- optimize collection routes
- get real-time analytics



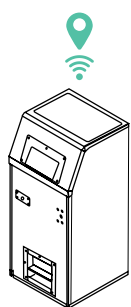
# Superfy S121 BriteBin Smart Container

## TECHNICAL SPECIFICATIONS

<b>Dimensions</b>	<b>120 L / 32 Gallons Side Door:</b> 624 x 628 x 1345 mm (25 x 25 x 53 in) <b>120 L / 32 Gallons Front Door:</b> 600 x 592 x 1347 mm (24 x 23. x 53 in) <b>240 L / 64 Gallons Front Door :</b> 794 x 685 x 1478 mm (31 x 27 x 58 in) <b>360 L / 96 Gallons Front Door :</b> 911 x 698 x 1536 mm (36 x 28 x 61 in)
<b>Waste Opening</b>	Hopper or Flap opening
<b>Service Door Location</b>	Side / Front / Rear
<b>Capacity</b>	<b>120 L / 32 Gallons:</b> up to 10 times the volume of a standard 60 L street bin <b>240 L / 64 Gallons:</b> up to 20 times the volume of a standard 60 L street bin <b>360 L / 96 Gallons:</b> up to 30 times the volume of a standard 60 L street bin
<b>Colour</b>	Grey Ral 7024 (standard)
<b>Optional Additions</b>	<ul style="list-style-type: none"> <li>• Bespoke Stickers / Partial wrap</li> <li>• Aperture Dimension and Shape (Rectangular / Circular)</li> <li>• Ashtray (Integrated / External)</li> <li>• Dog Waste Tray / Dog Waste Bag Dispenser</li> <li>• Custom Colour (Minimum order required)</li> </ul>



Using the Superfy Platform resources can be deployed to only those units requiring service, creating efficiencies and cost savings.



Superfy Smart Containers take real-time fill-level readings.



Once full, the Superfy Smart Container generates an alert to the Superfy Platform to notify that the bin is ready for collection.

